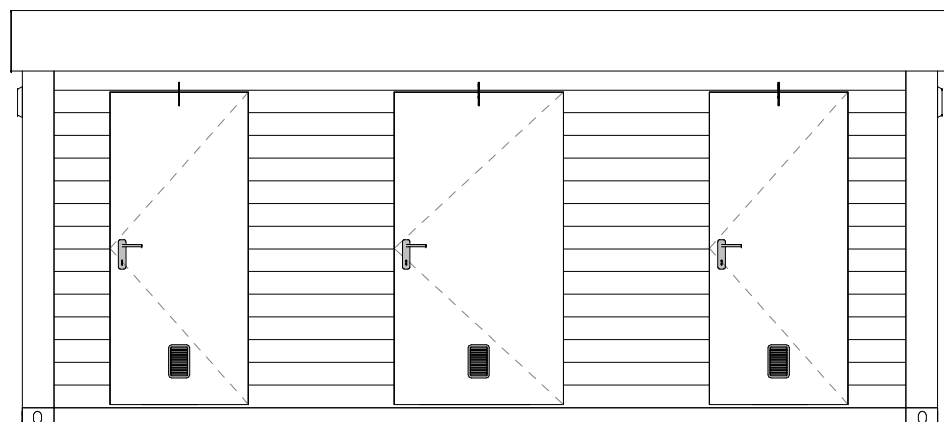
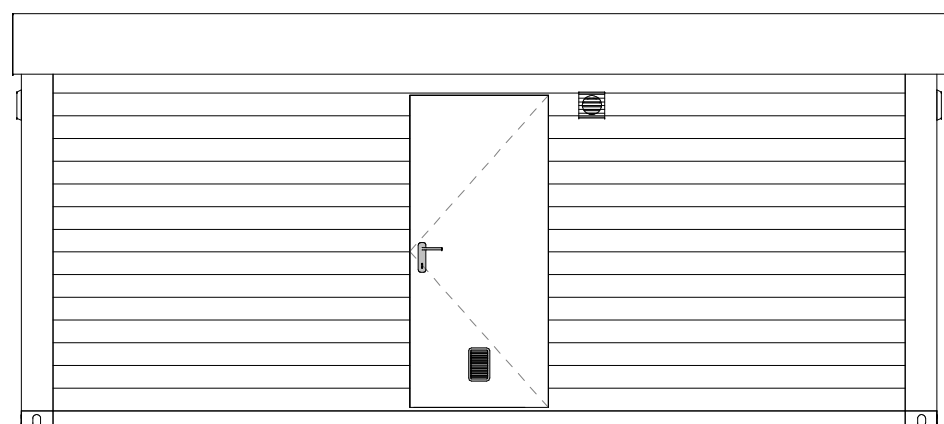


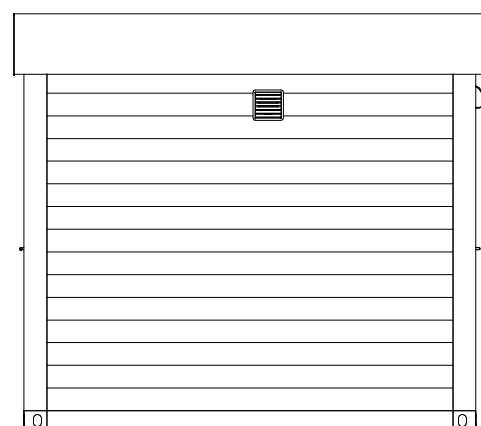
Pogled spredaj
1 : 50



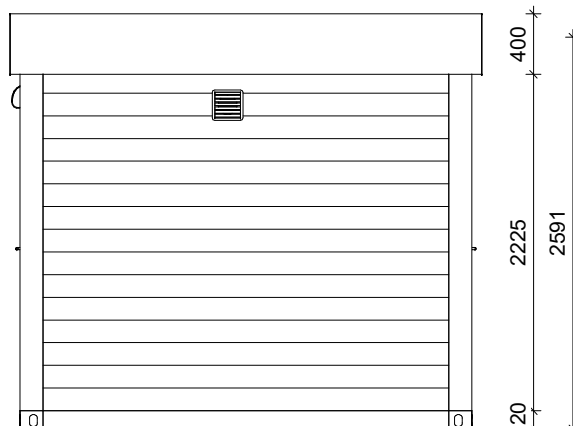
Pogled zadaj
1 : 50



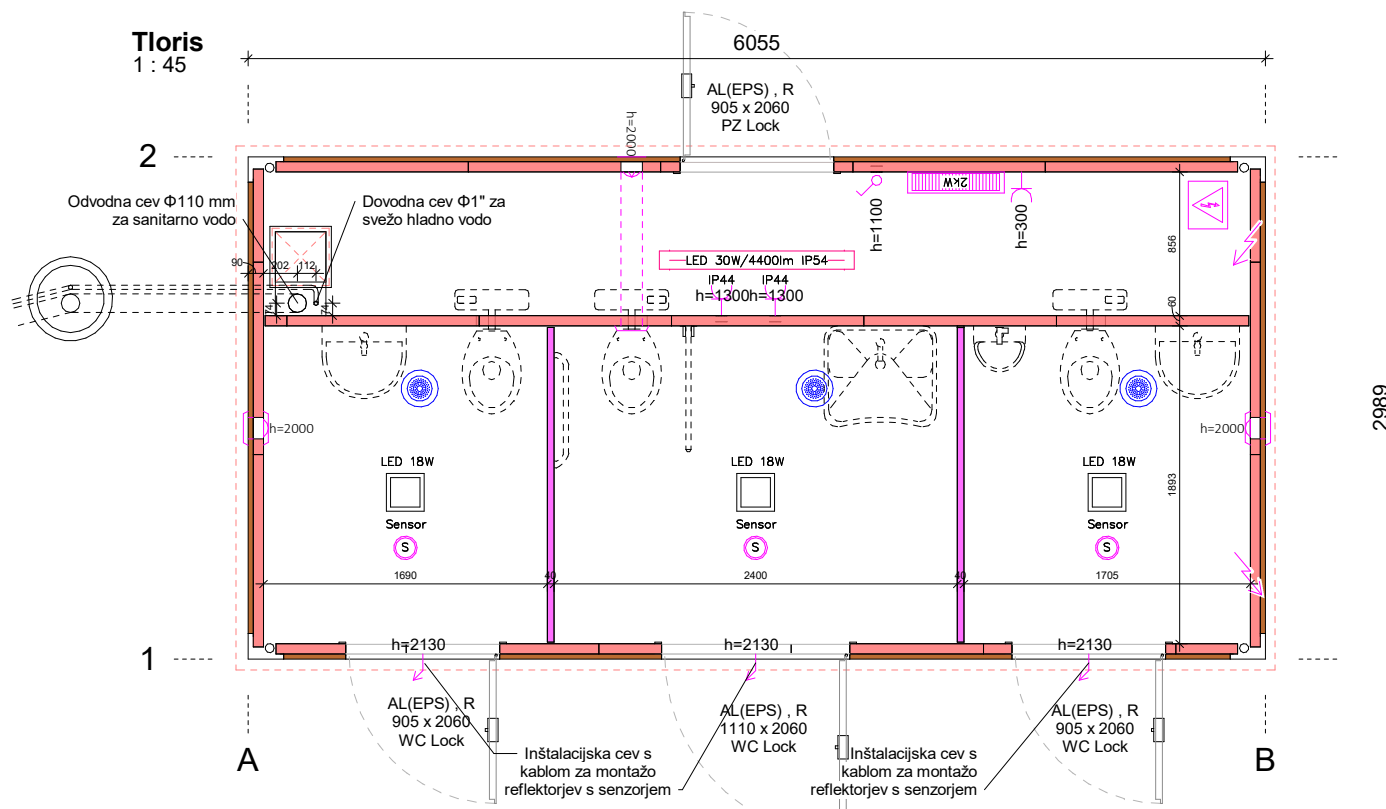
Pogled z leve
1 : 50



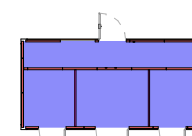
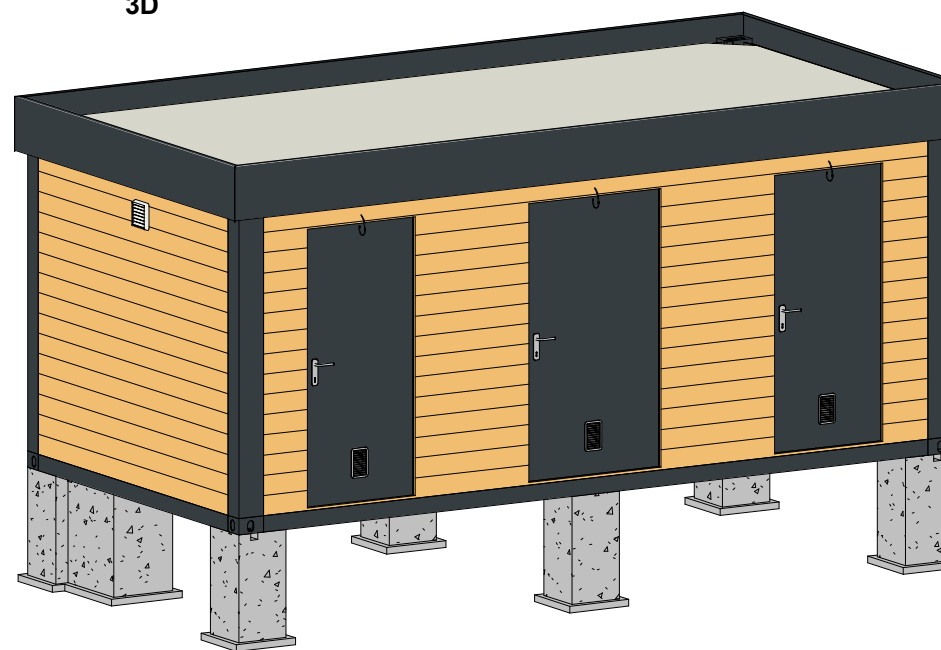
Pogled z desne
1 : 50



Tloris
1 : 45

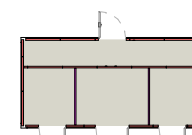


3D



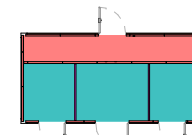
Obloga poda

PVC siva



Barva sten

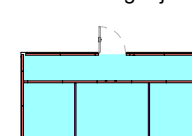
RAL 9002



Nosilna pl. poda

Lesocementna plošča

Lesocementna plošča + Talno grejje



Obloga stopa

Iverica bela

Tip luči		Kos
LED 30W/4400lm IP54	Luč LED 30W IP54	1
	LED luč 1x18W senzor	1
	LED luč 1x18W senzor, senzor	2
	Senzor gibanja	3

Elektro oprema		Kos
	Kabel	3
	Radiator el. 2kW	1
	Vtičnica enojna IP20	1
	Vtičnica enojna IP44	2
	Stikalo navadno IP20	1
	Ventilator	3

Tip panela	Izolacija	Dožina [m]	Stk.
Fe-40	40mm	3.75	2
FTV-60 [9002/9002]	60mm	22.99	23

Poz.	Naziv	Svetle dim.	Dim.	Material	Kos
D105	Vrata enokrilna AL(EPS), R	805x2000	905x2060	AL	3
D107	Vrata enokrilna AL(EPS), R	1010x2000	1110x2060	AL	1

Investitor:
Ime risbe: Tloris s pogledi
Objekt: CTN 20'x10'
Št.projekta: QT-2019-9828
Datum: 13.1.2020

Št. risbe: DRW-2019-9828 - 01
Verzija: 01
Merilo: As indicated
Risal: Igor Krištof
Odobril:

Nalepke / PVC IEC 60364
Vodovod /
Elektrika /
Vilice / 100mm
Izolacija stropa / 100mm
Izolacija poda /
Okvir vroče cink. /
Barva okvirja RAL 9002
Notranja višina 2.326m
Izvedba CTN Sestavljen